

St. Anne's Episcopal Church  
*Striving to Grow in Christ's Love and Share it With Others*

## March 2011

### Burning the Mortgage Campaign at St. Anne's

**We are a welcoming and diverse family united in Christ.**

#### Calendar of Events

##### March

**5** - 8:00 a.m. Men's Fellowship Breakfast

9:00 a.m. to 3:00 p.m. Vestry Retreat

**8** - 5:00 p.m. Pancake Supper and Talent Show

**9** - 7:00 p.m. Ash Wednesday Service

**27** - 2:00 p.m. Millpond Bible Study

4:00 p.m. Homeless Meal

##### April

**12** - 7:00 p.m. Unfinished Business

**17** - Palm Sunday

**19** - Metro Chapter of OSL at St. Anne's

**21** - 7:00 p.m. Maundy Thursday Service

Prayer Vigil from 9:00 p.m. to 6:00 a.m.

**22** - 7:00 p.m. Good Friday Service

2:00 p.m. Millpond Bible Study

4:00 p.m. Homeless Meal

For complete calendar, visit [www.saechurch.org/](http://www.saechurch.org/)

This year 2011 marks an anniversary year in the history of St. Anne's Episcopal Church. We are proud to have moved from mission to parish status in the Diocese of Iowa since 2005. The present Vestry leaders with the recommendation of the Finance Commission have had to take some extreme measures in trying to help us to meet for the first time our deficit budget for 2011.

The first recommendation presented at the Annual Meeting was to **"Burn The Mortgage"** if possible by **April 15th of 2011**. This would immediately take away the necessity of paying off the existing mortgage from 1990. This is a monthly savings of around \$650 which would help us to balance our 2011 budget. Other cost savings measures by the Vestry have included.:

1) A close look at all of the budget line items for 2011. Extras have been cut out.

2) Complete review of our staff including Rector's full time position, the Office Manager Karen Carter, the Music Minister Kevin Purscell, and John our custodian. The recommendation has been made to keep the Rector's cut in salary in 2010 by \$5,000 per year at the same level in 2011. Cutback the Of-



ice Manager from four afternoons to three per week.

3) Our final action was to encourage St. Anne's leadership to enroll through the Diocese of Iowa in the Episcopal Church Building Fund. In this program we will investigate the possibilities of leasing unused space in the church facilities during the week to an outside business to produce more monthly income.

We would encourage our present and past members of St. Anne's to join together as a team and help us in **"Burning The Mortgage"**. This would reduce our monthly income from \$2,500 needed to much less.

If you have any questions on the campaign please contact Doug Karlen, Sr. Warden at [linand-doug@mchsi.com](mailto:linand-doug@mchsi.com) or Ron McCartney, Treasurer, at 745-2344 or [mccartneyb@mchsi.com](mailto:mccartneyb@mchsi.com).



#### Inside this issue:

<a href="#">Faith Stepping Stones</a>	8
<a href="#">Habitat for Humanity</a>	3
<a href="#">Lent</a>	2
<a href="#">Parish Health</a>	4
<a href="#">St. Luke the Evangelist Catholic Church</a>	3
<a href="#">South Sudan Celebration</a>	6

**DAYLIGHT SAVINGS TIME BEGINS AT 2:00 A.M. ON SUNDAY, MARCH 13. TURN YOUR CLOCKS AHEAD ONE HOUR.**





## What is Lent?

Throughout Lent, the worship services of the church take on a simpler tone, one appropriate to the season. Vestments and altar coverings are the color of purple. Purple has always been the color of Kings and Royalty, so we remember Jesus Christ as Our King. There are no banners in the church. Flowers may be very simple stems, if any. Hymns and liturgy do not contain the word "Alleluia". Often times the children will bury the "Alleluias" during this season and uncover them again on Easter Sunday. These practices help the worshipping community mark this season of renewal and spiritual growth as a special time in the church year as we prepare for Easter.

## Observing Lent

The custom is to mark the season of Lent by giving up some things and taking on others. Both serve to make the season a holy time of preparation. Some exam-

ples of items people give up for Lent include sweets, meat, for all or some meals, and alcohol. In most cases, giving up something for Lent is more meaningful by using the money or time for another purpose. For example, one could spend mealtimes on fast days in prayer. Another example is that if you give up meat during Lent,

the money that would go to meat dishes can go to a group, such as Meals for the Heartland, which works to end hunger in countries such as Haiti. Some things added during Lent are daily Bible readings, fasting on Fridays, extra times of prayer or taking a course of study related in some way to spiritual growth.

Note that the season of Lent is forty days plus the six Sundays. This is because Sundays are celebrations of Jesus' resurrection. Sun-

days can be an appropriate day to lessen the restrictions of Lent. For example, if you have given up desserts for Lent, you could enjoy a piece of pie on Sunday without breaking your fast.

Lent is also an especially appropriate time for the sacrament of confession. While confession to a priest is not required to receive God's forgiveness, it can be a meaningful rite of reconciliation to God when the sinful action seems to the person unforgiveable by the corporate confessional prayer in worship.

## Special Days and Services



### Shrove Tuesday

This year will be Tuesday, March 8. This is actually the day before Lent begins. The name of Shrove Tuesday comes from "shriving" or confessing that was traditional on this day before

*(Continued on page 5)*

## Mark your calendars:

The St. Anne's garage sale will take place on June 10 and 11 from 8:00 a.m. to 12:00 p.m.

Start saving your "sellable" items!

## Habitat for Humanity

The Ankeny Circle of Faith (ACOF) agreed to a goal of \$20,00 toward a 2011 sponsorship for the Greater Des Moines Habitat for Humanity.

In addition to raises funds ACOF will help Habitat seek gifts-in-kind such as the HVAC system, windows, and plumbing.

ACOF also agreed to recruit several volunteers for the first three to six days of construction, plus provide volunteers at least one Saturday crew per month until the house is completed.

Anyone wishing to donate money toward this project or volunteer their time, please contact Joann Olson, jolson@dwx.com.

The house to be built will be located at 1959 Francis and is a split-level style home. Volunteers will likely be capping the basement of the home and starting to frame the house during July.

## Pictures Needed

Mary Oliver is looking for pictures of St. Anne's members for the Roanridge video being prepared. Pictures can be of members on mission trips, feeding the homeless, living nativity, SummerFest parade, Reggie's Sleepout, anything where St. Anne's is represented at a community outreach event.

## Saint Luke the Evangelist Roman Catholic Church

By now, many members of St. Anne's have heard about the new Roman Catholic Church and elementary school starting up in Ankeny. The location will be west of Irvingdale Road. St. Anne's has been a great opportunity to reach out and provide our gift of hospitality to this new congregation and their priest The Rev. Larry Hoffman. They have settled on the name of their church to be Saint Luke the Evangelist Roman Catholic Church.

You will begin seeing new members beginning on March 15, 16 & 18 when they will hold their Worship Services at 7:45 am and on Thursdays at 5:30 pm. Please make them feel welcome in their new temporary home. The current Vestry leaders of St. Anne's have been asked if we might consider leasing some office space to the new congregation.

It has been determined that the one classroom on the west end of the building near the door and the present Nursery would be all of the space needed at this time. Occasionally there will be need for the sanctuary during the week at 7:45 am and the Parish Hall when we are not using these facilities for our own activities. Sunday mornings worship for the new church will be held at one of the Elementary Schools here in Ankeny.

Karen Carter our Office Manager and in charge of scheduling like before. We will have to plan ahead for our many activities so that we will not be interfering with any activities. It will be everyone's responsibility to contact Karen in advance for the reserving of the facilities at St. Anne's. If you have any questions please call her at 964-5152.

## New Horizons Lasagna Dinner

You are invited to attend the 10th Annual Lasagna Dinner Fundraiser to be held on March 25, 2011. Please join us at The First United Methodist Church, Uptown Ankeny, from 4:30 p.m. to 7:00 p.m.

Tickets are on sale at New Horizons. Adults: \$8.00 in advance, \$9.00 at the door. Children: under 10: \$4.00 in advance, \$5.00 at the door. Children under 3 are free. All proceeds benefit the Participants at New Horizons.

Menu includes; meat, cheese and vegetable lasagna, salad, breadsticks, and home baked pie. Take out is available. Whole pies will also be for sale.



## Pine Ridge Mission Trip

The Mission Trip to Pine Ridge will take place from July 22 to July 30.

## Faith Stepping Stones - Final Session

Five families have attended the Fourth Faith Stepping Stone - My Bible.

The parents of children age five through 5th grade were encouraged to attend this Stepping Stone Session. They were given the opportunity to purchase a Bible for their child for use in these sessions.

The purpose of My Bible is to:

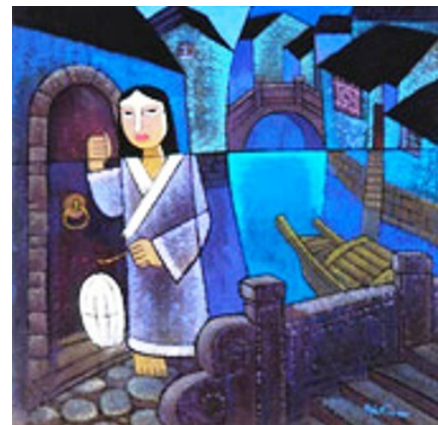
- Teach the whole story of salvation by walking children and parents through the Bible, highlighting 120 key Scripture passages from Genesis to Revelation
- Prepare a Bible for 120 nights of home devotion
- Add the reading of one Bible verse each night to the bedtime ritual of sharing of Highs & Lows, prayer, blessing, and putting children to sleep with music that features God's Word.

The five families who completed this course with their children are:

- Joel, Andi, Annika and Jared Baker
- Jessica and Wyatt Carlson
- Sarah, Andrew, Sam and Leah Eichhorn
- Erik, Mary and Anja Gjullin
- Shane, Heather, Ella and John Morris

The last session will be held on Monday, March 14 at 6:00 p.m. and will cover Universal Letters and the Revelation.

Certificates of completion will be awarded on a Sunday morning in March.



## PARISH HEALTH

### Disabilities

By Joann Olson, RN, Ed. D.

Faith Community Health Minister

### St. Anne's Newsletter

We need your help. We would like to know what kinds of things you would like to see in your newsletter; how often you want to receive the newsletter. We want to publish a newsletter that does more than communicate events and announcements. Please give us your suggestions via email to [secretary@saechurch.org](mailto:secretary@saechurch.org) or if you prefer to remain anonymous, please them in the Newsletter Suggestion Box on the Table in the Parish Hall.



*"For the whole law can be summed up in this one command: Love your neighbor as yourself." Galatians 5:145 NLT*

There are approximately 54 million people living in the United States with various kinds of disabilities that impact the way they lead their daily lives. Conditions causing disability include mental illness, blindness, military injuries, mental retardation, learning disabilities and problems with hearing. A large portion of this population have physical disabilities or mobility problems because of a link to diseases like multiple sclerosis, cerebral palsy, polio, or various spinal injuries.

Historically we have handled this population poorly and rather than encourage them, have kept them isolated in their homes. How welcoming were the sweeping staircases in churches of the 1900's? Are we doing better today or are we still keeping people 'trapped' at home with caregivers that are just as isolated? Churches need to include the disabled into the active life of membership as well as support the families who care for them. Check in with the family of those with disabilities to see how you can be of help.

Offer to sit with the husband disabled from a stroke so the wife can get her hair done. Take the mother/spouse of one dealing with mental illness out for lunch to offer her respite from her daily challenges. Sometimes it's the small things that help the most.

Those with disabilities want to be productive at home and at church so look for ways to be inclusive. Is your building handicap accessible? Can a person get into the sanctuary as easily as they can the bathroom? Are there classes, small groups, or ministries in which the disabled can participate? Evaluate the tools that are currently available in your church. Are there devices and magnifiers to help the hearing and visually impaired? Have classes been adapted to welcome those with Down's Syndrome or other mental disorders? Are there groups to support the families of those with disabilities? Christ welcomed everyone to this table; what about you?

*(Source: Interfaith Disability Connection  
[www.interfaithdisability.org](http://www.interfaithdisability.org))*



### Soup Suppers

Soup Suppers will be on Wednesday, March 16 at 6:00 p.m. The soup and crackers will be provided. If you would like to bring something else to share, please do so.



(Continued from page 2)

beginning the 40 days of Lent. This day is also known as Mardi Gras, or Fat Tuesday, because it was a time for eating the things from which one would abstain during Lent. Traditionally, St. Anne's holds a pancake supper, open to the public, on Shrove Tuesday. This pancake supper, is a reminder of using up some of the ingredients not needed during Lent.



Over the years, the youth at St. Anne's are involved in cooking and serving the pancakes to the

Ankeny Community and the proceeds donated for service outreach to Pine Ridge Mission Trip or other youth ministries.

### Ash Wednesday

Ash Wednesday marks the first official day of Lent. A special liturgy is offered Wednesday at 9:00 am and 6:30 pm. The theme for the day, though not for all of Lent, is that we stand as sinners condemned to die, but saved only by God's grace.



This is symbolized by the imposition of ashes on the forehead, with the words, "you are dust and to dust you shall return." In the Old Testament, ashes were a sign of penitence (feeling regretful at offenses) and mourning.

Ash Wednesday is one of two days of special observance (the other being Good Friday) for which fasting is recommended. While this usually refers to going without food for the entire day, however, this practice may not be practical for all persons, including, but not limited to, diabetics. Use your own discretion in determining how you can best observe this day.

### Soup Supper and Share a Dish - Wednesdays 6:00 p.m.

Throughout the five Wednesdays in Lent, we share a simple soup supper at St. Anne's together as a community. This precedes a worship service that includes the Stations of the Cross and a study time on the 24 Hours That Changed the World by Adam Hamilton.

### Stations of the Cross - Wednesdays 6:30 p.m.

These stations are a depiction of 14 incidents in the Gospel account of Jesus' death from

Pilate's house to being placed in the tomb. They are used for the



service called the Way of the Cross, which visits each station in turn with a brief reading, response, collect and on some occasions, a meditation. If you are not familiar with this worship, you are encouraged to try this service as we walk the footsteps of Christ in the last few hours of Jesus life.

### 40 Days of Reflection: 24 Hours That Changed the World



During Lent in 2011, we are reading a scripture each day with a note for each of the 40 Days of Lent. These will encourage us to witness the humanness of Christ, what he suf-

fered for you and me and all of humanity. Copies \$10 each and are available in the Parish Hall while supplies last.

### Special Dramatic Readings and Sermon Themes

A drama group will act out five Gospel lessons each Sunday in Lent. Anyone who wishes to highlight the last 24 hours of Christ for the people in the congregation may participate. They will replace the normal Gospel readings usually led by our Deacon. The sermons in Lent will focus on the themes of each Chapter including The Last Supper: Mandates by Jesus; Gethsemane: Prayer and Betrayal; Condemned by the Righteous; The Choice Between Two Saviors; Jesus' Humiliation and Torture; God's Power of Love Over-

comes the Cross.

### Spiritual Growth Groups

A DVD with Adam Hamilton on the biblical site will be presented to spiritual growth groups of six members meeting each week. They will discuss the DVD and some scriptural passages related to the theme and sermon of the day. These will meet on Sundays at 9:15 a.m. or Wednesday nights 7:00 p.m. and as arranged

### Children - 7 Faces of Christ

Children ages 5-10 in Godly Play will learn the story of Jesus birth, life and death.

### Face of Christ:

As a newborn child  
As the One who as a boy was lost and found  
Who was baptized and blessed  
Temptations in the desert  
Healer and parable-maker  
Face of the bread and wine as shared with his disciples  
The last face of Christ focuses on the cross and Easter.

These lessons bring Christ's story to the important center of our lives.

### Palm Sunday

This Sunday before Easter is the last Sunday of Lent. The day commemorates Jesus triumphal entry into Jerusalem with a blessing of palms and a procession in which the whole congregation carries palms. The day is also marked by the reading of the entire story of Jesus passion (the word used

(Continued on page 6)

to describe Jesus' death comes from "suffering" which is one older meaning of passion). Often the children learn to make Palm used to make the Ash



Wednesday ashes for the next year.

#### **Maunder Thursday**

This is the Thursday in Holy Week (the week leading up to Easter). The evening begins with an Agape Meal, a modified Seder supper, celebrated with olives, cheeses, and crackers, breads prior the worship.

The day is a time for remem-

bering The Last Supper. The name comes from the Latin word "Maun datum" or mandate or commandment as Jesus said, "I give you a new commandment, that you love one another."

The children often grow grasses and bring plants to decorate the Garden of Gethsemane for the all night vigil. At the conclusion of this service, the main altar is stripped of any ornamentation and crosses are removed or veiled to mark the solemnity of the occasion.

#### **All Night Vigil of Prayer**

The people of St. Anne's observe a vigil of prayer from 9:00 p.m. to 6:00 a.m. At this time, Jesus was in the Garden praying with his disciples who fell asleep, unable to keep watch with their Lord. We pray for

needs of the sick, the world, read scriptures of the Garden and the events that took place during this time in the Gospel of Matthew Chapters 26, 27, 28. Time may be spent at St. Anne's Church in front of the Garden of Repose. Many decide to spend their hour of prayer at home.

This is the second day of special observance for which fasting is recommended. One should use discretion in deciding how best to observe this day. There is no celebration of Holy Communion from Maunday Thursday until Easter Sunday services of worship at 8:00 and 10:30 a.m.

#### **Good Friday**

The Friday in Holy Week is a time for remembering Jesus death. Traditionally in some churches there is a Good Friday service at noon as Jesus hung of the cross



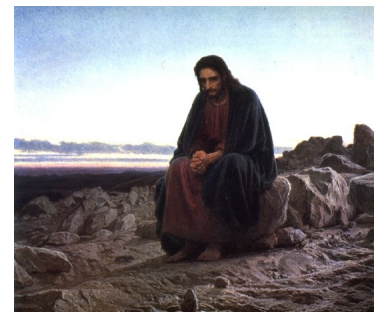
from 12:00 noon until 3:00 pm. There is an evening service at 6:30 p.m. We have invited dancers to share interpretive dance and the Solemn Service of Good Friday and the traditional Reading of John's Gospel.

#### **Easter Sunday**

On this day, we celebrate the Resurrection of Jesus with "Alleluias" and fanfare. Hymns proclaim the resurrection on this day at 8:00 a.m. and 10:30 a.m. Between services, Easter brunch is held with everyone bringing an egg dish, or sweet rolls and fruit, to share. Choirs sing special anthems.

Vestments are in the Easter White. Easter lilies decorate the sanctuary. These lilies remember a day of thanksgiving or the memory of loved ones.

Easter is the most joyous celebration of the Christian year.



## **Celebration Of Birth Of South Sudan Nation**

The people of St. Anne's received the following invitation from Henry Lejukole:

The people of South Sudan recently voted for secession in exercise of their rights of self-determination and a new nation has been born in the world. The Sudanese Community in Iowa will be marking the birth of the South Sudan Nation with a

grand celebration in Des Moines. The occasion will showcase traditional dances, cultural exhibition and fashion show, Sudanese cuisine, and information booth, among other things.

**Date: Saturday  
March 12, 2011  
Venue: Polk County  
Convention Complex,  
501 Grand Avenue  
Time: 2:00 - 6:00 p.m. (Main**

#### **presentations and performances)**

We greatly appreciate the leadership and support of the government and people of USA in bringing about the Peace Agreement in 2005 that ended the civil war in South Sudan; the dividends of which we are celebrating. We would, therefore, be greatly honored by your presence in this occasion.



# Ministry Commissions

## Clergy and Staff

- **Rector** - Fr. Bob Kem  
(rector@saechurch.org)
- **Office Manager** - Karen Carter  
(secretary@saechurch.org)
- **Deacon** - Rev. William Magie  
(wwmagie@aol.com)
- **Deacon** - Rev. Kathy Tripses  
(ktripses@msn.com)
- **Music Minister**-Kevin Purscell  
(KJCDM5@yahoo.com)

## Administrative Commission

- **Sr. Warden** - Doug Karlen,  
(linanddoug@mchsi.com) Finance/Personnel

## Buildings and Grounds

- **Jr. Warden** - Lorene Harris  
(LandRHarris@mchsi.com) and Brandon North  
(bdnorth@mchsi.com)

## Liturgy/Worship Commission

- **Altar Guild** – Erica Lamb (lambone1@mchsi.com)
- **Chalice** - Steve Hanson (stevehanson@q.com)  
and Heidi Schleicher  
(Heidi\_schleicher@msn.com)
- **Greeters** - Dan Kem (Daniel\_kem@yahoo.com)
- **Lectors** – Dick Tripses (tripses@msn.com)
- **Music** – Kevin and Julie Purscell  
(KJCDM5@yahoo.com)
- **Acolytes** - Ken Finch (KHFinch@mchsi.com) and  
Phil Hedges (phrunwithdoes@yahoo.com)

## New Members

- Heidi Schleicher (Heidi\_schleicher@msn.com)

## Christian Formation Commission

- **Nursery Coordinator** (nursery to age 3) –  
Jessica Carlson
- **Godly Play** (age 4 to grade 2)- Mary Gjullin  
and Sarah Eichhorn
- **GP Extreme** (grades 3- 5) – Joel Baker  
(andi.baker@mchsi.com)
- **Rite 13** (grades 6-8) – Andi Baker
- **J2A** (grades 9-12) – Andi Baker, Phil Hedges,  
Fr. Bob Kem
- **Adult Formation** – Doug Karlen
- **Kerygma Bible Study** – Fr. Bob Kem
- **Order of St. Luke (OSL)** – Kathy Tripses, Fr.  
Bob Kem

## Fellowship and Parish Life Commission

- **Coffee Hour and Kitchen** – Joann Olson

## Human Needs

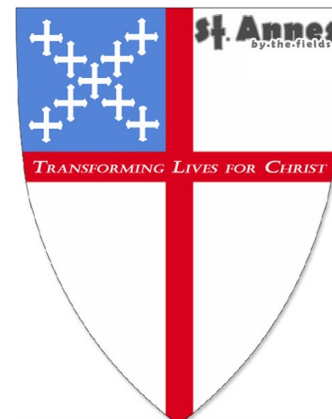
- Mary Oliver (mmo492@q.com) and Audrey  
West (awest1305@aol.com)
- **Little Roses** - Connie Skinner

## Pastoral Care Commission

- **Pastoral Care** – Lin Karlen
- **Prayer Chain** – Lin Karlen
- **Parish Health Ministry** - Joann Olson
- **Mill Pond/New Horizons** -Deacon Kathy  
Tripses (ktripses@msn.com)
- **Parish Health Ministry** - Joann Olson  
(jolson@dwx.com)

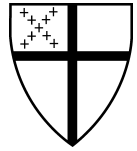
## Finance Commission

- Ron McCartney  
(ron.mccartney@mchsi.com)



St. Anne's Episcopal Church

2110 West 1st Street  
Ankeny, IA 50023  
515-964-5152



We're on the web:  
[www.saechurch.org](http://www.saechurch.org)

## Worship Services

### Sundays:

8:00 a.m. and 10:30 a.m. - Holy Eucharist  
9:15 a.m. to 11:15 a.m. - Little Blessings Nursery (nursery to age 3)  
9:15 a.m. to 10:15 a.m. - Adult Class Forum  
9:15 a.m. to 10:30 a.m. - Godly Play 1 (4 yrs to Grade 2)  
5:00 p.m. to 8:00 p.m. - Rite 13/J2A (Grades 6-12)

### Wednesdays

7:30 a.m. - Holy Eucharist / Healing

### Special Lenten Services starting March 16

6:00 p.m. - Soup Supper  
6:30 p.m. - Worship/Stations of the Cross  
7:00 to 8:15 p.m. - Video/Small Group Discussion

### Thursdays:

7:00 p.m. - Contemplative Prayer Group

Church office email: [secretary@saechurch.org](mailto:secretary@saechurch.org)

Phone: 515-964-5152

Office Hours: Monday through Thursday 1:00 - 5:00 p.m.

All times by appointment.

## Birthdays and Anniversaries

### Anniversaries

3/14-Michelle & Alyson Fey-Awan

### Birthdays

3/3-Jessica Walsh  
3/4-Joel Armitage  
3/4-Erica Lamb  
3/4-Scott Moore  
3/8-Ron McCartney  
3/9-Tracy Sawhill  
3/10-Lin Karlen  
3/12-Lorene Harris  
3/12-Jim Walsh  
3/14-Greg Skinner  
3/15-Cassedy Clifton  
3/20-Ashton Teague  
3/25-Anja Gjullin  
3/26-Joel Baker  
3/30-David Finch

